

Hotel Accommodation – Thursday 14th June 2018

Accommodation List for NI North West Branch Dinner

Event Date: Thursday June 14 2018

Event Venue: The Principal Manchester (formerly the Palace Hotel), Oxford Street, Manchester, M60 7HA



Hotels

We have arranged some specially discounted rates at a few neighbouring hotels, which can be booked via contacting reservations@intelligent-venues.com or booked directly with the hotel utilising the instructions as given.

The rates are subject to availability, and rooms are limited in each venue, so early booking is recommended.

Extra nights may be available at the agreed rates also (subject to availability), ask for information on booking.

Some bedrooms are located close to The Principal and within walking distance, whereas some are a short taxi ride / tram ride away.

If you have any difficulty booking the rooms, then please contact:

reservations@intelligent-venues.com



The Principal Hotel 4*

Oxford Street

M60 7HA

[Website](#)

Price: £141 including VAT and Breakfast

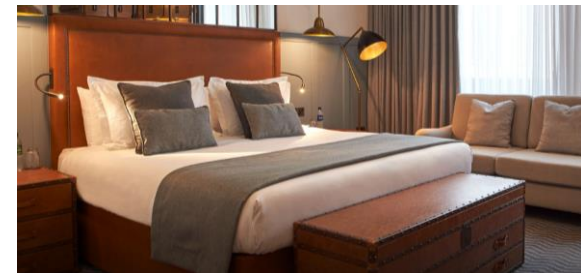
(A limited number of bedrooms are available)

BOOK EARLY TO AVOID DISAPPOINTMENT



- Formerly The Palace Hotel
- Completely refurbished to a high standard and rebranded under The Principal
- The NW Annual Dinner is taking place on the lower ground floor – so the bedrooms are onsite
- Located directly outside Oxford Train Station and an approximate 10 minute walk to Piccadilly Train Station
- Located close to Spinningfields and Deansgate
- 270 bedrooms with only 40 allocated to the group at this stage
- Extra bedrooms may be negotiated but possibly not at this low rate!
- Early booking is advisable
- Cancellation FOC up to 10th May – after that full charges will apply

To Book: Please email reservations@intelligent-venues.com



Ibis Styles 3*

3-5 Portland Street

M1 6DP

[Website](#)

Price: £65 including VAT and a Continental Breakfast



- Approximately a 7 minute drive or a 13 minute walk to The Principal Hotel
- An approximate 5 minute drive or walk from Piccadilly Train Station
- Formerly the Portland Hotel, this hotel has recently changed to an Ibis Styles
- 204 bedrooms that are weather themed and there is a quirky style running through the hotel
- There are 15 bedrooms allocated for the group
- Free wifi

To Book: reservations@intelligent-venues.com



Ibis Manchester Portland Street 3*

96 Portland Street

M1 4GX

[Website](#)

Price: £75 including VAT and Continental Breakfast



- Part of The Accor Chain of hotels
- Approximately a 6 min walk or drive to The Principal Hotel
- An approximate 10 minute drive or walk to Piccadilly Train Station and a 6 minute walk or drive to Oxford Road Station
- 127 bedrooms of which 20 are allocated for the group

To Book: reservations@intelligent-venues.com



Crowne Plaza Oxford Road 4*

55 Booth Street West

M15 6PQ

[Website](#)

Price: £129 including VAT and Breakfast

(A limited number of bedrooms are available)



- Brand New Build Hotel located just off Oxford Road – opening May 2018
- The hotel is part of the IHG chain and a welcome new addition to Manchester
- Located next to Manchester Business School and an approximate 14 minute walk to Piccadilly Train Station and 10 minutes to The Principal
- Wifi included
- Cancellation FOC up to 10th May

To Book: [Booking Link](#) – Code - NIA

If you book this hotel, please remember to check with them a few weeks prior to see if they are on target for opening.

Inside 4*

1 First Street,
M15 4RP

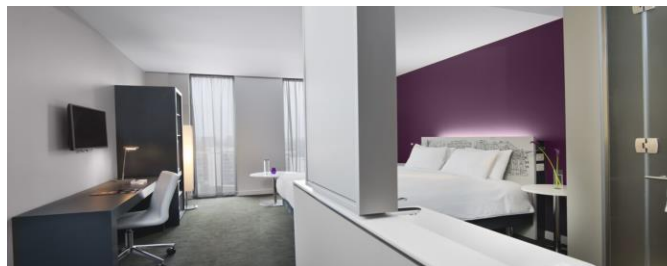
[Website](#)

Price: £119 including VAT and breakfast



- Inside is approximately 5- 10 minutes walk from The Principal Hotel or a few minutes in a taxi
- Its approximately 10 minutes walk from Oxford Road Train Station and a 20 minute walk from Piccadilly Train Station
- Modern, bright and contemporary hotel that is part of the Meliá brand of hotels
- 208 bedrooms
- Located on the new development, First Street

To Book: reservations@intelligent-venues.com



Great John Street Hotel (Boutique)

Great John Street

M3 4AW

[Website](#)

Price: £132 including VAT and Breakfast

(A limited number of bedrooms are available)



- An approximate 8 minute drive or a 15 minute walk to The Principal Hotel
- Approximately a 25 minute walk to Piccadilly Train Station and a 15 minute drive or walk to Oxford Road Train Station
- Located close to Spinningfields and Deansgate
- Boutique hotel with a cosy, homely feel
- The hotel has 30 bedrooms and booking is subject to availability
- The hotel used to be an old school house which is subtly shown throughout parts of the hotel
- Has a south facing roof terrace called 'The Playground'
- The bedrooms are Duplex Style

To Book: Please email reservations@intelligent-venues.com

